

# NATIONWIDE LABORATORIES WINTER NEWSLETTER

UNITED BY CARE, DRIVEN BY EXCELLENCE

## NEW PRACTICE RESOURCES

5 Essential Tips for Building Your Successful New Veterinary Practice

[READ MORE →](#)

Supporting new practices in a changing veterinary landscape

[READ MORE →](#)

So, you want to open a practice: what's next?

[READ MORE →](#)

The early days in your new practice – management and leadership

[READ MORE →](#)

The early days of your practice – support and guidance

[READ MORE →](#)

Taking the initiative to support new practice owners

[READ MORE →](#)

Dream Big with NVS Group: Your New Practice Plan of Action

[READ MORE →](#)

## FREE ONLINE RESOURCES

LabFacts is our handbook with tips and information from our pathologists

[READ MORE →](#)

NationWide Specialist Laboratories Handbook covers testing for endocrine diseases, pregnancy, and drug monitoring in dogs, cats, horses and other species

[READ MORE →](#)



## Message from David Charvill

Dear friends,

Welcome to our winter newsletter! At NationWide Laboratories, we are committed to supporting your veterinary practice with quality diagnostics. Our laboratory provides a range of diagnostic tests and expert interpretations for companion, exotic, and farm animals. Our systems integrate seamlessly with your practice management software, and our digital courier booking app and UK-wide sample collections help streamline your workflow so you can focus on what matters – your patients. We are working on updates and improvements to our online customer portal, aiming to enhance its functionality and better meet the needs of your practice. At the London Vet Show, we were pleased to announce our strategic alliance with Woodley Equipment Company, offering a comprehensive approach to laboratory services. This collaboration provides access to in-clinic equipment alongside our reference laboratory, enhancing patient outcomes and practice efficiency. For new practice owners, we offer four weeks of free testing to help ease the challenges of getting started. At NationWide Laboratories, we aim to be your trusted partner by delivering accurate and reliable results that empower you to make informed decisions. We look forward to supporting your practice in any way we can.

David Charvill,  
Director of Laboratory Services



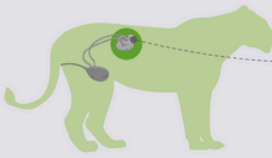
# NationWide Laboratories "In The Lab" article series in Veterinary Edge

NationWide Laboratories has partnered with Veterinary Edge magazine to deliver the "In The Lab" series, offering veterinary professionals deeper insights into key topics in animal health and diagnostics. Together with you, we will explore the role of zoos in biodiversity, understanding and managing diabetes in pets, caring for senior animals, interpreting urinalysis and urine cytology, and the critical importance of environmental monitoring in practice. Complemented by detailed infographics, these resources provide practical knowledge and actionable insights to enhance diagnostics, patient care and efficiency. This ongoing series reflects our dedication to supporting vets and nurses in practice, so stay tuned for future editions.

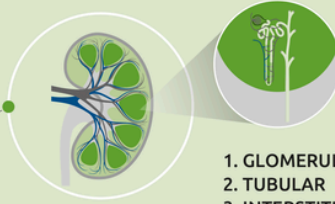
## CHRONIC RENAL DISEASE IN CAPTIVE FELINES

### SIGNS OF RENAL DISEASE

INCREASE IN THIRST → LOSS OF APETITE → WEIGHT LOSS → LETHARGY

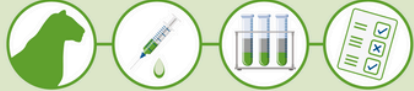


### RENAL ABNORMALITIES




1. GLOMERULAR
2. TUBULAR
3. INTERSTITIAL

### DIAGNOSTIC TESTING



- UREA • CREATININE • PHOSPHORUS
- URINALYSIS



**87%**


OF CAPTIVE BIG CATS HAVE RENAL ABNORMALITIES

Source: Junginger, J. et al. (2015)

Click to read the full article: [Disease, laboratory diagnostics and the role of zoos in biodiversity.](#) Original publication: Veterinary Edge, issue 40, June 2024, pp 22-24

## DIABETES MELLITUS IN COMPANION ANIMALS


### SIGNS OF RENAL DISEASE



Polyuria   Polydipsia   Polyphagia

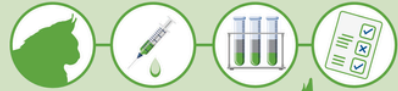
Weight loss   Lethargy

### RENAL THRESHOLD




Hyperglycaemia leads to glucosuria if the renal threshold is exceeded.

### DIAGNOSTIC TESTING



- BLOOD GLUCOSE
- FRUCTOSAMINE
- URINALYSIS



250-300 mg/dL   200 mg/dL

Source: Behrend, E. et al. 2018 AAHA Diabetes Management Guidelines for Dogs and Cats.

Click to read the full article: [Decoding diabetes mellitus in dogs and cats.](#) Original publication: Veterinary Edge, issue 42, August 2024, pp 24-26

## NATIONWIDE LABORATORIES NOW OFFERS NU.Q® VET CANCER SCREENING TEST IN THE UK

It is a simple, affordable, easy to use blood test which can be used as part of a wellness check for older dogs as well as younger dogs with an increased risk of developing cancer in their lifetimes, such as those with a familial history and certain breeds. By measuring and analysing nucleosomes in the DNA, the Nu.Q® Vet Cancer Test can identify patients who may have cancer. This must be confirmed by follow up procedures, for example, a biopsy or a scan. Alongside other routine blood work and imaging, this test may help find cancer at an early stage, before symptoms appear, allowing for a better chance at effective treatment.

To enquire about this service/ subscribe to it please email [cls.info@nwlabs.co.uk](mailto:cls.info@nwlabs.co.uk)

## NATIONWIDE SPECIALIST LABORATORIES OFFERS A SERVICE FOR THE ANALYSIS OF ERYTHROPOETIN (EPO)

EPO plays a key role in the regulation of red cell mass and erythrocyte production. EPO may be used to aid the differential diagnosis of polycythemia and non-regenerative anaemia. Raised levels of EPO occur in secondary polycythemias and renal tumours. Low/normal levels may occur in renal failure and polycythemia vera.

Sample requirement is 0.5mL separated serum. For further enquiries, please ring 01223 493400

## CENTRE OF EXCELLENCE FOR HISTOPATHOLOGY

We provide diagnostic veterinary histopathology services to veterinary practitioners and universities throughout the UK and worldwide. Our interest does not stop at the point of diagnosis, and we are involved in research in veterinary medicine.

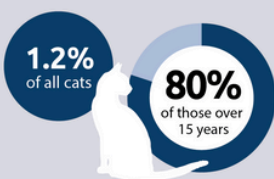
We have contributed to publications based upon both the samples that our clients send us and also in collaboration with other veterinary centres and universities.

## ... continued

At NationWide Laboratories, our strength lies in a dedicated team of experts from diverse veterinary disciplines, all contributing their knowledge to the articles in this series. **Sandra Wells**, Head of Operations, ensures the smooth running of lab operations, leads sustainability initiatives, and tailors test packages to meet the unique needs of your practice. **Helen Evans**, NationWide Specialist Laboratories Manager, brings over 20 years of experience in endocrinology and biochemistry to provide valuable insights and practical solutions. Dr. **Stacey Newton**, Head of Clinical Pathology, offers expert guidance on sample collection and interpretation, while Michelle Pittilla, Head of Microbiology, focuses on infection control and environmental monitoring. Together, their deep commitment to animal welfare and their expertise in supporting veterinary practices drives our mission to provide the resources, guidance, and knowledge you need to deliver exceptional care to your patients.

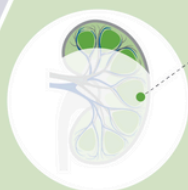
### DIAGNOSTIC TESTING IN SENIOR PETS

#### CHRONIC KIDNEY DISEASE



Source: Conroy, M. et al. (2019); Chen, H. et al. (2020)

#### PATHOLOGICAL CHANGES SUBCLINICAL



75% of renal function lost before clinical signs apparent:

- Increased thirst
- Poor appetite
- Lethargy
- Weight loss

Source: Brown, S.A. (2013)

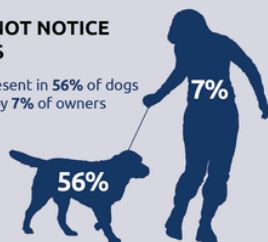
#### DIAGNOSTIC TESTING



• BIOCHEMISTRY • HAEMATOLOGY • URINALYSIS

#### OWNERS MAY NOT NOTICE CLINICAL SIGNS

Polydipsia was present in 56% of dogs but only noticed by 7% of owners



Source: Davies, M. (2012)

Click to read the full article: [Disease, diagnostics, and the care of senior pets](#). Original publication: *Veterinary Edge*, issue 44, October 2024, pp 28-29



### URINALYSIS IN COMPANION ANIMALS

#### DIAGNOSTIC TESTING



Physical characteristics  
Urine specific gravity  
Chemical analysis



Sediment examination  
Culture and sensitivity

#### SEDIMENT EXAMINATION

A key part of urinalysis, especially in the presence of proteinuria.



Source: Gibbs, N.H. et al. (2023)

#### ROUTINE SCREENING

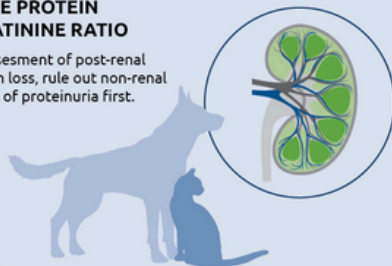
Persistent proteinuria was present in 13% of apparently healthy elderly dogs.



Source: Willems, A. et al. (2017)

#### URINE PROTEIN CREATININE RATIO

For assessment of post-renal protein loss, rule out non-renal causes of proteinuria first.



Click to read the full article: [A guide to urinalysis and urine cytology in companion animals](#). Original publication: *Veterinary Edge*, issue 46, December 2024, pp 24-25



### SAME DAY PTH

NationWide Specialist Laboratories is offering a SAME DAY service for the analysis of canine, feline and equine parathyroid hormone (PTH). Parathyroid hormone-related protein (or PTHrP) is assayed once a week on Wednesday with results available on Thursday. If you want our RAPID PTH service as well as PTHrP, please submit 2 separate frozen EDTA Plasma samples. PTHrP will continue to be analysed once a week. **For more details, please contact us at 01223 493400.**

### GERIATRIC PET PROFILES

Comprehensive testing is recommended for senior dogs and cats, due to the higher risk of underlying disease. There are four main categories of wellness testing for senior pets: **complete blood count, biochemistry profile, urinalysis, and thyroid hormone testing**. Our canine and feline geriatric profiles include a chemistry panel to **evaluate kidney and liver function, antibody and protein levels, blood sugar, cholesterol, electrolytes and more**. For more information, contact us at [info@nwlab.co.uk](mailto:info@nwlab.co.uk).

### HYDROTHERAPY POOL WATER TESTING

We all know that hydrotherapy in conjunction with veterinary treatment can assist in improving the rate of recovery and healing of animals after injury or surgery. At NationWide Laboratories we can assist you in demonstrating to your clients that your facility meets the guidelines for water safety and quality through our hydro pool testing service, which meets the requirements of hydrotherapy associations such as CHA and NARCH.

We will provide you with the sample bottle, guidance on how to take the sample and prepaid postage to get the sample to us. You will receive a report of printed enumerated results for total viable count at 37 degrees itemising *total coliforms*, *E. coli*, *Pseudomonas aeruginosa* and guidance for interpretation. **Simply call 01253 899215 or email [info@nwlab.co.uk](mailto:info@nwlab.co.uk) for more information.**



## ENVIRONMENTAL MONITORING IN VETERINARY PRACTICE

### IMPACT OF HOSPITAL-ACQUIRED INFECTIONS (HAIs)

**82%** of veterinary teaching hospitals reported HAIs

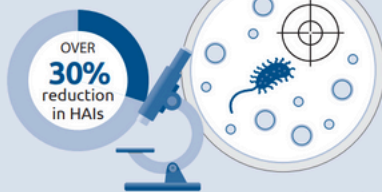
**32%** had to close part of their facility to control disease spread

**58%** restricted patient admissions

**NO ENTRY**

### SURVEILLANCE

Surveillance reduces HAIs by over 30%



### PRACTICE CHECKLIST

- Identify high risk areas
- Swab every 3 months
- Select appropriate screening tests
- Review and adjust cleaning protocols
- Monitor trends over time

Click to read the full article: [A clean bill of health: The role of environmental monitoring in veterinary practice](#). Original publication: *Veterinary Edge*, issue 47, January 2025, pp 24-25

## Inspired Vet - Trevor Whitbread

Our Anatomical Pathologist Trevor Whitbread has been featured in the Inspired Vet ebook by the Veterinary Woman. Trevor's journey reflects the essence of being an inspired vet - his commitment to continual learning and intellectual engagement in veterinary pathology serves as a model for fulfilling a meaningful career. As an anatomical pathologist at NationWide Laboratories, he brings nearly four decades of invaluable experience and insight, particularly in dermatopathology. He is a Diplomat of the European College of Veterinary Pathologists (ECVP) and a Fellow of the Royal College of Veterinary Surgeons (RCVS). In his interview, Trevor emphasises the importance of understanding the science behind diagnoses and encourages other professionals to pursue their passions while maintaining a healthy, balanced life outside of work. Join us in celebrating Trevor's remarkable contributions to veterinary medicine and his inspiring approach to lifelong learning!



Click on the arrow to read full Trevor's interview

## ONLINE CUSTOMER PORTAL: IT'S LIKE 1, 2, 3 - JUST AS EASY AS CAN BE

Our online customer portal is designed to streamline the sample submission, tracking and result reporting process. It perfectly aligns with our commitment to delivering a greener pawprint by offering you this alternative to a paper-based system.

This platform is set to give you another additional way to interact with us, offering a faster and more convenient means of managing sample submissions, tracking their progress and obtaining results. It is a software interface that gives you complete visibility into your interactions with our laboratories. To start using the platform please contact us at [CBailey@nwlabs.co.uk](mailto:CBailey@nwlabs.co.uk)

## HOW CLEAN IS YOUR PRACTICE?

We offer you a microbiological screening programme to screen your facilities and equipment. Swabs are supplied with simple instructions and a postage paid envelope for return to our laboratory for testing. We test for aerobic and anaerobic cultures as well as specific cultures for yeast and fungi. This comprehensive testing includes (but is not limited to) cultures for the following major groups of organisms: *Enterobacteriaceae*, *Enterococci*/*Streptococci*, *Pseudomonadaceae*, *Staphylococci* (Meticillin resistant/sensitive) as well as spore forming bacteria such as *Bacillus* and *Clostridium spp.*

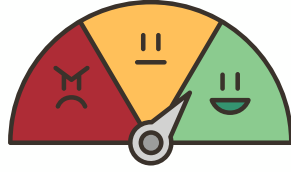
For more information, contact us at [info@nwlabs.co.uk](mailto:info@nwlabs.co.uk).

## SAME DAY SDMA

NationWide Specialist Laboratories offers SDMA assay with results available the same day. This assay has been validated against Liquid Chromatography – Mass Spectrometry method which is the Gold standard. This is an immunoturbidimetric assay and has been validated for dogs, cats and horses. Li-hep plasma or serum are suitable samples for this assay.

For more details, please contact us at 01223 493400.

# Customer Voice Programme: Listening, Supporting and Celebrating Success Together



**On average, you scored us 9 or 10 out of 10; it has earned us NPS of 58**

As we step into 2025, we take a moment to reflect on the remarkable journey we shared with veterinary professionals throughout 2024. At NationWide Laboratories, our mission has always been to support the veterinary community with dependable, high-quality diagnostic services. This past year, your feedback has highlighted the impact of our efforts and inspired us to continue raising the bar.

## Dedicated Support and Seamless Service

Veterinary professionals consistently praised the ease of working with us. Comments such as "Very friendly and well-run lab" and "Always easy to communicate with" encapsulate the experiences of many who relied on our services. Our commitment to accessibility and efficiency is evident in feedback that recognised the "speedy turnaround of results" and the "clarity of communication" from our team. Whether through prompt resolutions to enquiries or tailored solutions to unique practice needs, we've strived to be a dependable partner.

## Driving Innovation in Diagnostics

2024 saw the successful implementation of advanced diagnostic tools and systems aimed at enhancing the precision and reliability of results. Veterinary professionals applauded these advancements, with one noting, "The portal makes tracking samples so much easier." By integrating technology into our workflow, we've simplified processes and helped practices deliver optimal care for their patients.

## Building Relationships That Matter

Strong relationships form the foundation of our service. Your feedback underscored the value of our personal touch. Many expressed appreciation for the attentiveness and expertise of our team. One vet commented, "The team's knowledge and approachability make all the difference." We're honoured to be considered an extension of your practices and aim to continue strengthening these connections.

## Celebrating Success Together

The successes of 2024 belong to all of us. From small animal practices to equine specialists, from independent clinics to corporate groups, your trust in NationWide Laboratories fuels our determination to excel. We're proud to have contributed to your achievements, whether by enabling timely diagnoses, supporting complex cases, or providing insights that shape better patient outcomes.

## Looking Ahead

As we look forward to 2025, we remain committed to exceeding expectations. Our focus will be on further improving accessibility, expanding our diagnostic capabilities, and continuing to listen to your invaluable feedback. Together, we will navigate the challenges and seize the opportunities that lie ahead.

Thank you for choosing NationWide Laboratories as your diagnostic partner. Here's to another year of collaboration and success.

Click on the arrow to leave us your feedback



## EQUINE SERVICE RE-LAUNCH

NationWide Laboratories has re-launched its equine services, offering faster turnaround times, improved value, and streamlined processes to meet the needs of your practice. Our enhanced range of tests and services is available at competitive prices, ensuring timely care for your equine patients. With a team of experienced scientists and pathologists, we provide accurate, high-quality results backed by stringent quality control. Our courier service and dedicated customer support ensure you are supported every step of the way. Learn more about our equine services at [nwlabs.co.uk/equine-diagnostics](https://nwlabs.co.uk/equine-diagnostics) or contact us at [info@nwlabs.co.uk](mailto:info@nwlabs.co.uk)

## ASK YOUR LABORATORY EXPERT

### Dr. Stacey A.

**Newton** is the Head Veterinary Clinical Pathologist at NationWide Laboratories and a leading equine expert. She graduated from the University of Bristol in 1993 and completed an internal



medicine residency at the University of Liverpool, earning her Certificate in Equine Medicine. Stacey holds a PhD in equine neurology, and achieved Diplomate status with the Royal College of Pathologists in 2008 and Fellowship in 2010. With numerous publications and presentations at events like the BEVA Congress, you can be assured that your cases are in safe and capable hands.

Ask your laboratory expert: biochemistry results in equine practice

[READ MORE →](#)

Ask your laboratory expert: haematology results in equine practice

[READ MORE →](#)

Diagnosing equine metabolic syndrome

[READ MORE →](#)

Diagnosing equine pituitary pars intermedia dysfunction

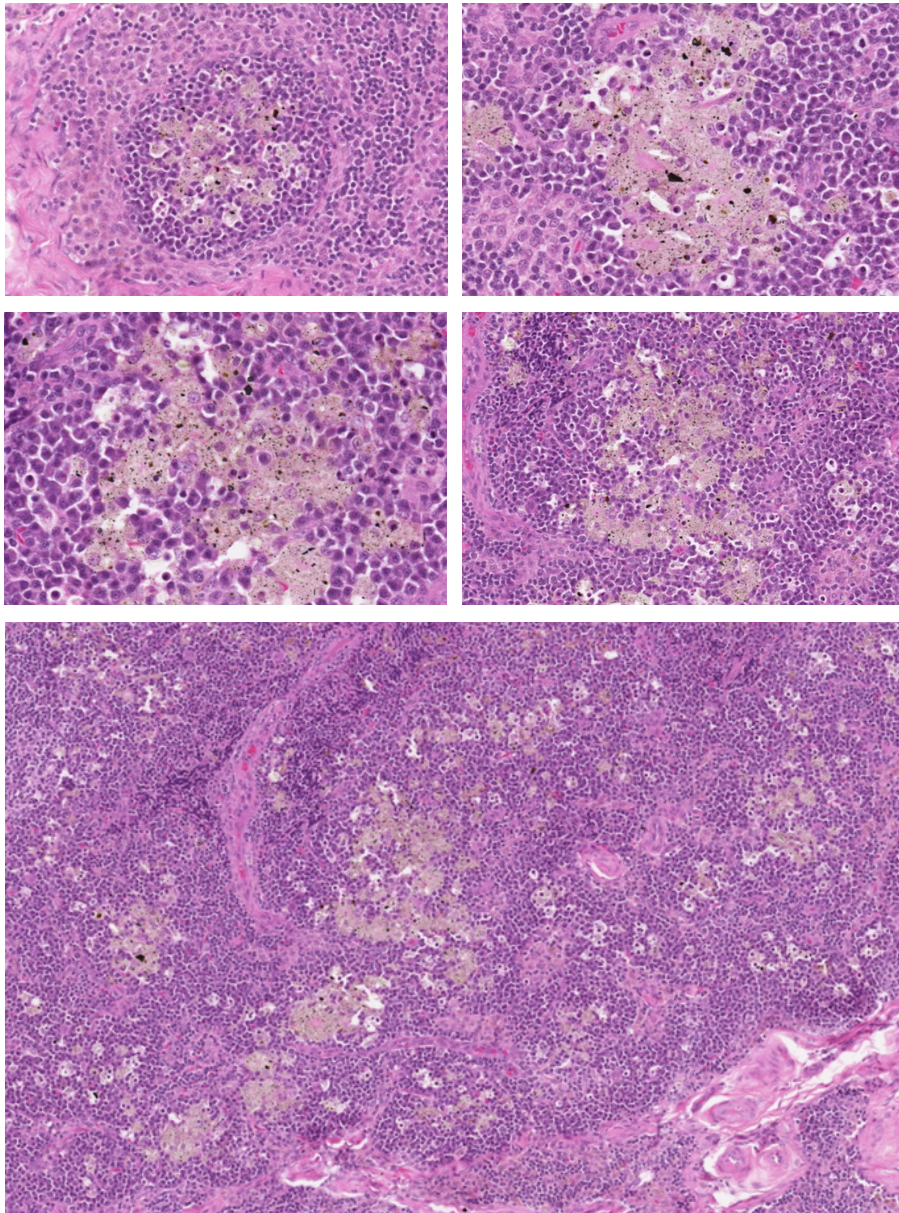
[READ MORE →](#)



# Case study: Mineral Associated Lymphadenopathy in a Dog

**Author: Karina Fresneda**

We received samples from prescapular and thoracic lymph nodes. Microscopically, the medullary sinuses were expanded by numerous plasma cells, small to intermediate lymphoid cells and macrophages, the latter were often laden with birefringent crystalline brown yellowish material. The diagnosis was mineral associated lymphadenopathy. This condition was first documented in the UK in the late 1980s, and it causes enlargement of lymph nodes. The pathogenesis is still unknown. The most common clinical signs in dogs are lymphadenopathy and non-specific signs such as pyrexia or inappetence. Histopathology is needed to confirm the diagnosis where the microscopic lesions are granulomatous lymphadenitis with accumulation of crystalline, mixed mineral material within the node, that is phagocytosed by macrophages. Electron microscopy of these nodes have shown that this mineral comprise a complex mixture of elements, such as aluminium, silicon, titanium or nickel, that are presumed to have an environmental origin; however, the source of them, portal of entry and mechanism of deposition within the peripheral lymph nodes has not yet been determined.



## References:

Lesions Associated with Mineral Deposition in the Lymph Node and Lung of the Dog M. J. Day, G. R. Pearson, V. M. Lucke, S. J. Lane, and R. S. J. Sparks <https://journals.sagepub.com/doi/pdf/10.1177/030098589603300104>

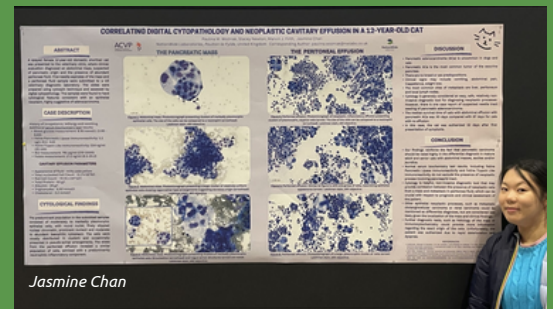
Differential Diagnosis of Lymphadenopathy. Michael J. Day. World Small Animal Veterinary Association World Congress Proceedings, 2004.

## NWL PATHOLOGY TRAINEES SHINE AT ACVP/ASVCP 2024 ANNUAL MEETING

The 2024 ACVP/ASVCP Annual Meeting took place in November in Seattle (USA), uniting veterinary pathologists and residents committed to advancing the field of veterinary diagnostics. This annual gathering provided a platform for experts to share the latest research and innovations, featuring a comprehensive program of presentations and discussions that fostered collaboration and knowledge exchange.

NationWide Laboratories is proud to highlight the achievements of our pathology trainees at the event. **Jasmine Chan** delivered a presentation on "Canine Keloidal Fibroma: Cytological, Histological, and Immunohistochemical Characteristics," showcasing her knowledge and engaging the audience. Additionally, **Paulina Woźniak** prepared a poster correlating digital cytopathology with neoplastic cavity effusion in cats (see the full case study on page 7), which was brilliantly presented by Jasmine.

These contributions not only spotlight the exceptional talent within our team but also reflect the dedication of our trainees to pushing the boundaries of veterinary pathology. The spirit of collaboration and innovation shared among participants during the meeting promises to inspire future advancements in the field, further enhancing the quality of care we provide.





# Case Study: Correlating Digital Cytopathology and Neoplastic Cavitory Effusion in a 12-Year-Old Cat



**Author: Paulina Woźniak**

An entire female 12-year-old domestic shorthair cat was presented to the veterinary clinic, where clinical evaluation diagnosed an abdominal mass, suspected of pancreatic origin and the evidence of abundant peritoneal fluid. Fine-needle aspirates of the mass and peritoneal fluid sample were submitted to a UK veterinary diagnostic laboratory. The slides were prepared using cytospin technique and assessed by digital cytopathology. The samples were found to have cytological features consistent with an epithelial neoplasm, highly suggestive of adenocarcinoma.

The predominant population in samples from the mass consisted of moderately to markedly pleomorphic epithelial cells, with round nuclei, finely stippled nuclear chromatin, prominent nucleoli and moderate to abundant basophilic cytoplasm. The cells were usually distributed in clusters and occasionally presented pseudo-acinar arrangements. The slides from peritoneal effusion revealed similar population of the cells, admixed with inflammatory component.

## Cavitory effusion parameters

Appearance of fluid – milky pale yellow  
Total nucleated Cell Count –  $11.3 \times 10^9/l$   
Red Cell Count –  $<0.01 \times 10^{12}/l$   
Total Protein – 43 g/l  
Albumin – 24 g/l  
Triglycerides – 6.62 mmol/l

## Cytological findings

The predominant population in the submitted samples consisted of moderately to markedly pleomorphic epithelial cells, with round nuclei, finely stippled nuclear chromatin, prominent nucleoli and moderate to abundant basophilic cytoplasm. The cells were usually distributed in clusters and occasionally presented in pseudo-acinar arrangements. The slides from the peritoneal effusion revealed a similar population of cells, admixed with a predominantly neutrophilic inflammatory component.

## Discussion

Pancreatic adenocarcinoma is uncommon in dogs and cats; however, it is the most common tumour of the exocrine pancreas. There are no breed or sex predispositions. The clinical signs may include vomiting, abdominal pain, inappetence, weight loss. The most common sites of metastasis are liver, peritoneum and local lymph nodes. The median survival time of cats with abdominal effusion was 30 days compared with 97 days for cats with no effusion. Cytology is generally considered an easy, safe, relatively non-invasive diagnostic tool for diagnosing neoplastic processes. However, there is one case report of suspected needle tract seeding of pancreatic adenocarcinoma. In presented case, the cat was euthanized 33 days after first symptoms occurred due to rapid deterioration. Other epithelial neoplastic processes, such as metastatic cholangiocellular carcinoma or renal carcinoma could be mentioned as differential diagnoses but are considered less likely given the localization of the mass and clinical findings. Further diagnostic tests, such as histology of the mass or immunocytochemistry could provide more information regarding the exact origin of the cells. Our findings reinforce the fact that pancreatic carcinoma should be rated highly in the differential diagnosis in mature adult and senior cats with abdominal masses, ascites and/or jaundice.

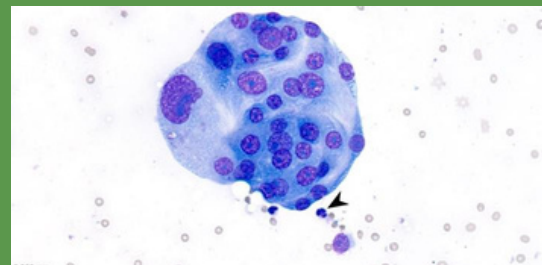


Figure 1. Abdominal mass. Photomicrograph presenting clusters of markedly pleomorphic epithelial cells. The size of the cells can be compared to a neutrophil (arrowhead). Leishman stain, x50 objective.

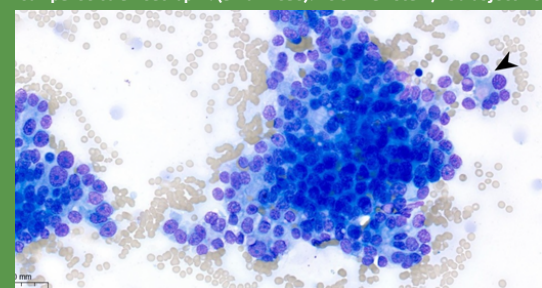


Figure 2. Abdominal mass. Photomicrograph presenting a larger cluster of relatively uniform epithelial cells showing vague acinar type arrangements, suggesting secretory origin (arrowhead). Leishman stain, x50 objective.

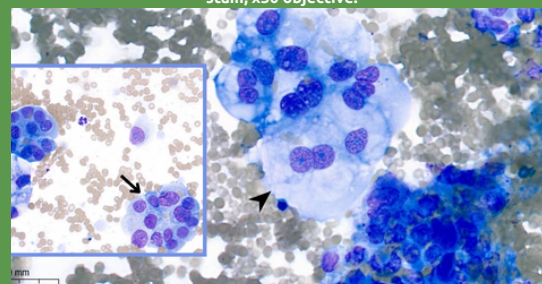


Figure 3. Abdominal mass. Photomicrographs presenting clusters of markedly pleomorphic epithelial cells. Binucleation (arrowhead) and vague acinar structures (arrow) are noted. Leishman stain, x50 objective.

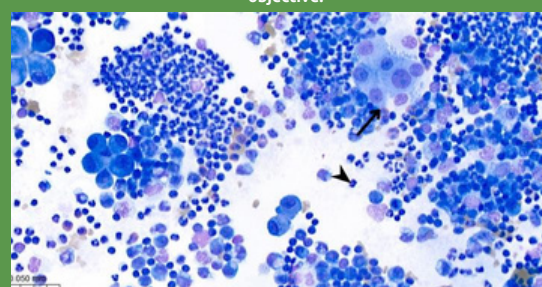


Figure 4. Peripheral effusion. Photomicrograph of neoplastic, inflammatory effect presenting clusters of pleomorphic cells (arrow). The size of the cells can be compared to a neutrophil (arrowhead). Leishman stain, x50 objective.

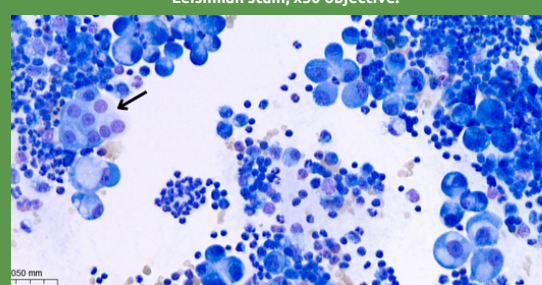


Figure 5. Peripheral effusion. Similar to Figure 4, with one group of cells resembling epithelial appearance (arrow). Leishman stain, x50 objective.

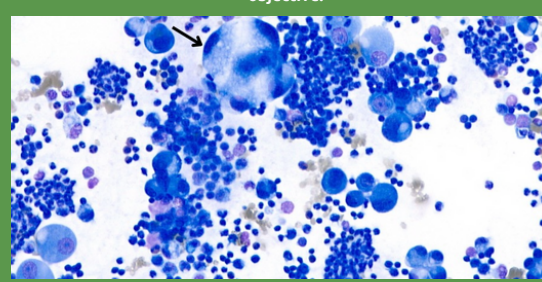


Figure 6. Peripheral effusion. Photomicrograph of a large pleomorphic cluster of cells (arrow). Leishman stain, x50 objective.

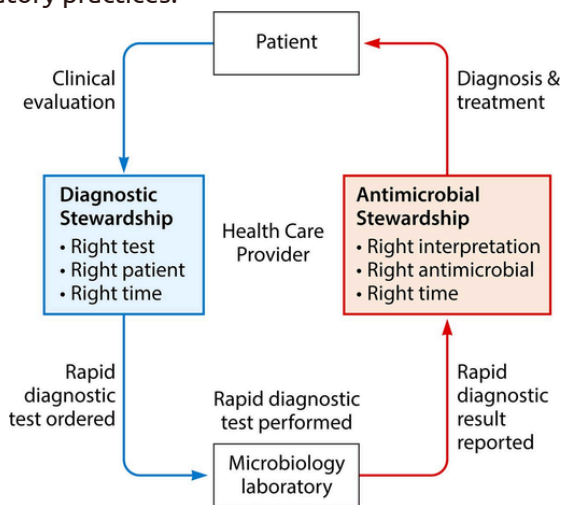
[Click on the arrow to access this case study with references](#)



# Antimicrobial Stewardship Day: Insights from NationWide Labs

On November 7, 2024, the University of Surrey hosted the Antimicrobial Resistance Diagnostic Stewardship Day, which focused on small and equine veterinary practices. **Rebecca Helders** and **Michelle Pittilla**, heads of the Microbiology Department at NationWide Laboratories, attended the event to gain insights into current issues surrounding antimicrobial resistance (AMR) and laboratory practices.

The event featured speakers from government agencies, universities, and veterinary practices who discussed the significance of AMR and the role of effective diagnostics. Dorina Timofte from Liverpool University gave a key presentation on essential steps in the diagnostic process, emphasizing the importance of providing high-quality samples to the lab for accurate results.



<https://doi.org/10.1128/jcm.02264-16>

Timofte stressed that for laboratories to produce accurate results, it is essential that samples are collected in the correct manner. Proper sample collection includes using the appropriate swab type and container and ensuring that samples are packaged for transport to prevent deterioration. Accurate completion of submission forms is equally important, as it provides the laboratory with crucial information about the sample's source, medical history, and any prior antibiotic treatments. This information allows the lab to tailor its testing methods, which leads to more relevant antibiotic susceptibility reports.

Tamsin Dewe from the VMD discussed government initiatives addressing AMR. Future plans include expanding surveillance to cover more species and incorporating data from companion animals. The discussion around the One Health approach, which recognises the linked nature of human, animal, and environmental health, aimed at creating a unified response to AMR challenges.

One significant outcome from the day was the agreement among attendees on the need to standardise methodologies across laboratories. Dr. Ashley Ward from the University of Liverpool noted that consistent practices would improve the reliability of results and facilitate better collaboration between laboratories and veterinary professionals. Liverpool's VetCLIN AMR project was highlighted as an initiative that aims to harmonise antibiotic susceptibility testing and provide valuable feedback to laboratories.

Another important topic covered by Els Broens included the challenges of interpreting antibiotic susceptibility testing when specific clinical breakpoints are not available. Broens explained that when facing cases with absent breakpoints, laboratories should follow established guidelines to interpret results appropriately.

In summary, the Antimicrobial Stewardship Day at the University of Surrey provided important discussions on improving diagnostic practices and addressing AMR in the veterinary field. The insights gained from this event will help NationWide Laboratories to better support veterinary practices in their efforts to address antimicrobial resistance effectively and promote antimicrobial stewardship.

## FIGHTING AGAINST AMR TOGETHER



We are proud to be involved in the "Surveillance of Antimicrobial Resistance in Clinical Infections from Companion Animals (VetCLIN AMR)" project in collaboration with the Institute of Infection, Veterinary and Ecological Sciences at the University of Liverpool. Our contributions of isolates from routine samples play a crucial role in monitoring antimicrobial resistance in companion animals and ultimately enhancing the health of pets in our care.

A special shout-out goes to **Laura Watts** from our microbiology team! Laura has been instrumental in gathering isolates and sending essential data to our colleagues in Liverpool. Dr. Shirley Bonner recently acknowledged Laura's hard work and noted that our sample collection efforts are exceeding expectations. Such recognition underscores our commitment to maintaining high standards in our laboratory practices and the proactive measures we take in safeguarding animal health.

This collaborative effort is more than just a project; it represents our dedication to fighting antimicrobial resistance. We are committed to continuous improvement and education for our clients, ensuring that they are well-informed about the importance of responsible antimicrobial use. Together, we can make meaningful strides in addressing this critical issue.

To learn more about our microbiology services, please [visit our website](#).